

# M6652 e-MMC Duplicator



- High Quality Production Instrument for e-MMC Devices
- Separate Master Drive Slot and Sixteen Copy Slots
- Easily Changeable Sockets to Support Multiple Package Sizes
- Support up to e-MMC v4.41
- Support to Modify the Extended CSD Register on e-MMC Devices
- Stand Alone Operation
- Easy to use GUI with a 17" LCD Display/Keyboard
- Mechanical Design Supports Optional Semi Automated Operation
- Fast Duplication with FPGAs Performing Parallel Copy on All Slots
- IMI Smart Copy for Fast Content Loading for Most File Systems
- Network Compatible with Powerful Logging Functions
- Functional Test Including Read/Write Pattern Tests and Current Measurements

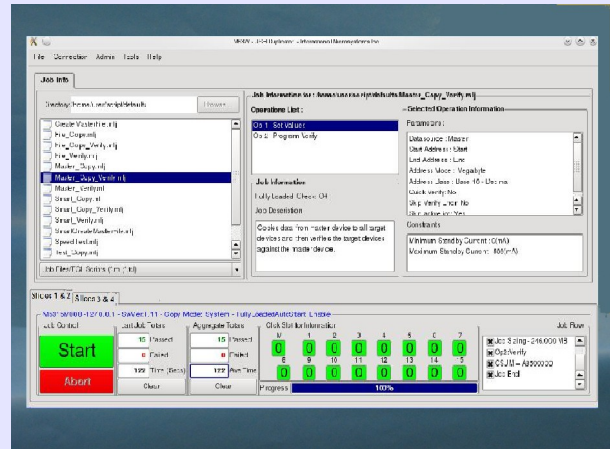
\*\*\*\* e-MMC is a registered Trademark of MultiMediaCard Association and JEDEC Solid State Technology Association



INTERNATIONAL  
MICROSYSTEMS  
INCORPORATED

556 Gibraltar Drive  
Milpitas, CA 95035  
Tel: 408-942-1001

# M6652 e-MMC Duplicator



## M6652 e-MMC Duplicator

The M6652 is a full featured production Duplicator for e-MMC devices. The M6652 can be run completely from its front panel using a 6 key input and the LCD status screen. Alternatively, a GUI using an 17" LCD display, Keyboard and Mouse can be used to define and execute simple or complex user defined scripts.

The M6652 has a 10/100/1000 Ethernet port which allows connection to standard networks. Multiple M6652 units can be networked together using the Ethernet switch and controlled using a common GUI.

## M6652 Specifications

<b>Copy Capacity:</b>	<b>1 Master Slot and 16 Copy Slots</b>
<b>Copy Methods:</b>	<b>Binary, File &amp; Smart Copy for FAT, FAT32, NTFS, EXT2, EXT3</b>
<b>Front Panel Display:</b>	<b>2 x 24 LCD</b>
<b>Power Supply:</b>	<b>350W 60-50Hz 100-240VAC SPS</b>
<b>Dimensions:</b>	<b>17" X 16" X 7" ( 43 X 40.5 X 18 cm)</b>
<b>Computer Interface:</b>	<b>10/100/1000 Gigabit Ethernet</b>
<b>Weight:</b>	<b>16 lbs (7.3 Kg) not including VGA, etc</b>
<b>Internal Hard Drive:</b>	<b>500 GB Standard</b>
<b>VGA Display:</b>	<b>17" or larger</b>
<b>ROHS Compliant:</b>	<b>Yes</b>

## System Part Number

**M6652-eMMC : 16 Slot e-MMC Duplicator**



**INTERNATIONAL  
MICROSYSTEMS  
INCORPORATED**

**556 Gibraltar Drive  
Milpitas, CA 95035  
Tel: 408-942-1001**