

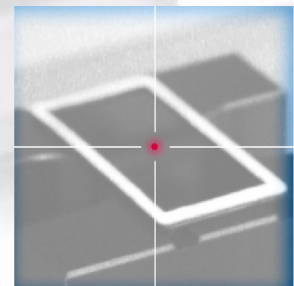
Ævo



capacity

2.0" x 2.0"

5.1 cm x 5.1 cm



The Ævo is a new generation of film adhesive placement technology with a print & apply option, that elevates state-of-the-art to a whole new level. This is the most accurate model available for a capacity of 2.0" x 2.0" / 5.1 cm x 5.1 cm.

Configurations

Benchtop configuration for semi-automatic operation

An operator loads/unloads the nest and starts the assembly process by using finger switches.

Benchtop configuration with drawers for semi-automatic operation

This configuration has a drawer nest assembly under the head of the machine which is loaded and unloaded by an operator. The loaded nest automatically cycles the machine.



The recognized leader in film adhesive placement technology.

www.accuplace.com

AEVO

AccuPlace Headquarters

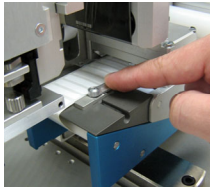
1800 NW 69th Avenue
Plantation, FL 33313
Phone: +1 954 791 1500
Fax: +1 954 791 1501
Email: sales@accuplace.com

AccuPlace, Pte.Ltd. Tech Center Singapore

10 Ang Mo Kio Street 65 #06 10A
Singapore 569059
Phone: +65 6483 4353
Fax: +65 6483 3156
Email: asiasales@accuplace.com

Features

- Web based (TCP/IP) machine interface allows highly advanced and intuitive machine parameter setup
- AccuPlace's proven Pick'n'Peel™ process for ultimate accuracy and process reliability
- Minimal mechanical adjustments warrantee easy setup and component changeover
- Rollerless drive technology means higher accuracy, lower maintenance, and longer life
- No tools required for routine maintenance
- Advanced clean room options for ultra-clean environments
- Simple material threading ensures quick roll replacements
- High precision construction for lasting quality



Print & Apply

- Zero-queue printing for serialized printing
- 300 dpi or 600 dpi available
- Very compact design of printer, integrated in applicator
- High print quality even on smallest labels
- Economic in material consumption
- Barcode scanner for print verification can be integrated



Operation Cycle

The AccuPlace unique patented peeling technology has been refined in this latest model. Besides the already proven high placement accuracy and repeatability of all kind of components, this advanced technology ensures also minimum wear and tear, toolless routine maintenance, as well as easy setup and quick product changeover.

- 1 The liner is pulled by a stepper motor through its path in the machine. The position sensor looks for a component and ensures the positioning of the component exactly below the vacuum chuck.
- 2 The placement actuator with its customized vacuum chuck extends to grasp the component.
- 3 The drive assembly retracts, pulling the liner around the peel edge and removing the liner from the retained component.
- 4 The placement actuator places the component into the fixtured target part. When the actuator returns to its original position, the peel edge is extended again and the cycle starts from the beginning.

Specifications

| | |
|------------------------------------|------------------------------------------------------------------------------------------------|
| Construction | Cast Aluminum Frame |
| Size: Depth | 571mm (22.48") |
| Height | 809mm (31.86") (incl. light stack indicator) |
| Width | 180mm (7.09") |
| Weight | 29.5 kg (65 lbs) (incl. printer) |
| Input Voltage | 100-240 VAC 50-60Hz 1ø |
| Current | 4A@220V or 8A@115V |
| Air Requirements | 5Bar (75 psi) 500l/min (1.8 cfm) |
| Capacity (Label or Component size) | Max 50mm x 50mm x 5mm thick / 2" x 2" x 0.2" L x W x H) |
| Label Roll Capacity | ø430mm (17") x 60mm (2.36") Liner Width |
| Label Roll Core Size | Ø76mm (3") or ø152.4mm (6") |
| Placement Repeatability | ±0.05mm (0.002") Typical, Component (Label) Dependent |
| Printing Thermal Media Capacity | Ø 69.85mm (2.75") x 60 mm (2.36") max, 20 mm (0.78") min., core ø25.4 (1") |
| Ribbon | Wound out thermal transfer ribbon, any color |
| Printing Registration Accuracy | ±0.05mm (0.002") Typical, Component (Label) Dependent |
| Print Quality | 300 dpi & 600 dpi |
| Speed | 1.5 sec. Typical peel & place, 2-5 sec. Typical print, peel & place |
| Clean Room Printing | Possible, requires the correct choice of label stock, ribbon, and core |
| Barcode Verification | Scanner integration possible |
| Life Time Print Head | 1.0x108 pixel cycles. (For a 300 dpi print head, the life time is 333,333" of print length) |

*component dependent. AccuPlace will evaluate your application upon receiving your parts and specifications.